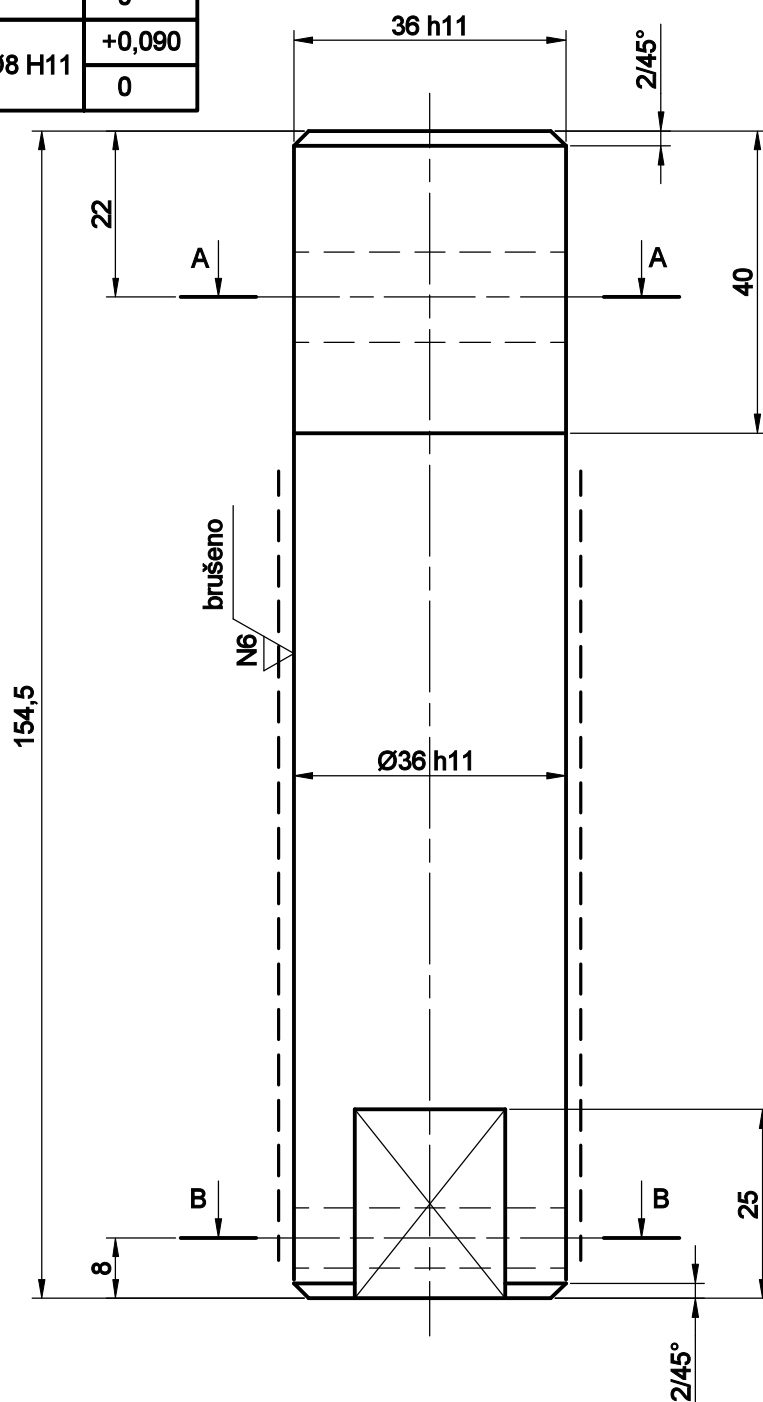
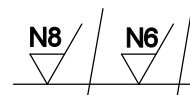
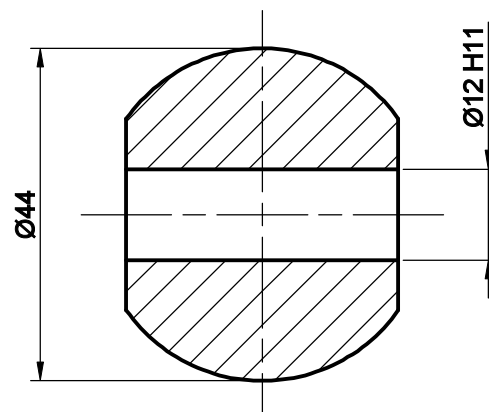


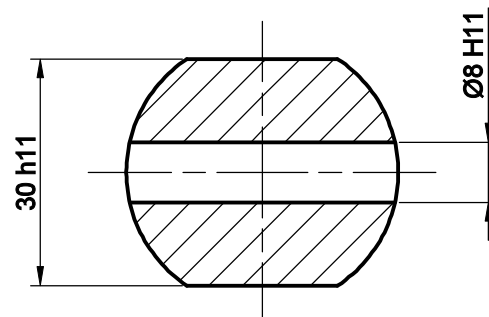
Ø36 h11	0
	-0,160
Ø30 h11	0
	-0,130
Ø12 H11	+0,110
	0
Ø8 H11	+0,090
	0



Presek A - A



Presek B - B



NAPOMENA

Poboljšati na 32 + 34 HRC

----- Indukciono kaliti na 55 + 58 HRC na dubinu 1,5 + 2 mm

N.B. 5 41 16 162

Stari crtež: 4-KUP-441 755/1

OSOVINICA PREČAGE					Č.4732		
POZ.	NAZIV				MATERIJAL	TEŽINA	DIMENZIJA
TENT - A OBRENOVAC	Format A4	Razmera 1 : 1	Datum 30.04.2015.	CRTAO	M. Živković	Broj crteža: 4116 / 4467	
				KONSTRUISAO	V. Radivojević		